



Screen Assembly Instructions

Parts Included

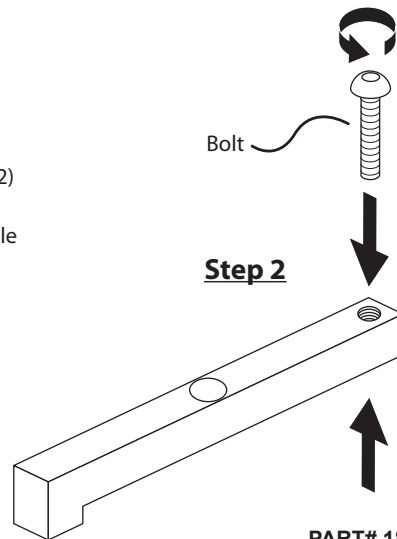
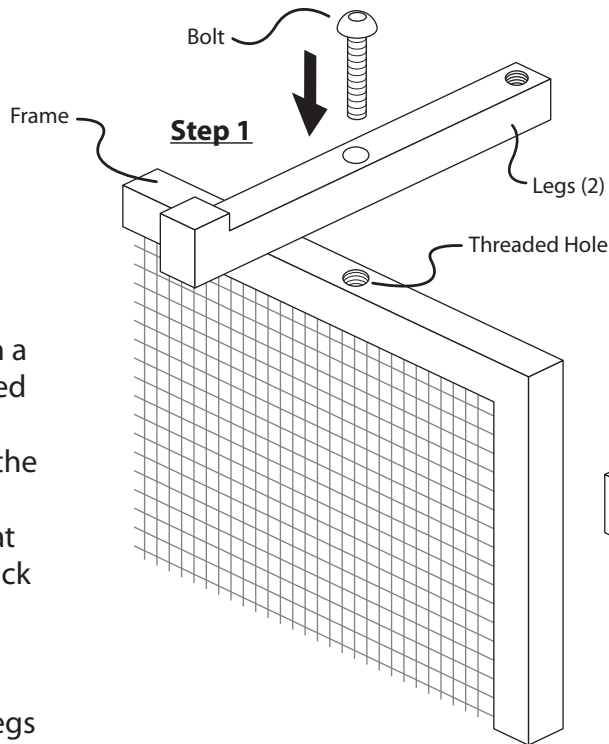
- Frame x 1
- Legs x 2
- Bolts x 4
- Allen Wrench x 1

Step 1

Place the Frame upside down on a soft surface so that the 2 threaded holes are facing up. Place Bolts through the Legs and secure to the Frame with the Allen wrench provided. The side of the Leg that has the hole faces toward the back of the Frame.

Step 2

Adjust Bolts in the back of the Legs accordingly for screen stability.



BOTTOM OF FRAME SHOWN IN ILLUSTRATION

- PART# 18310
- PART# 18311
- PART# 18312
- PART# 18313
- PART# 18314
- PART# 18319
- PART# 18321
- PART# 18322
- PART# 19264
- PART# 19265